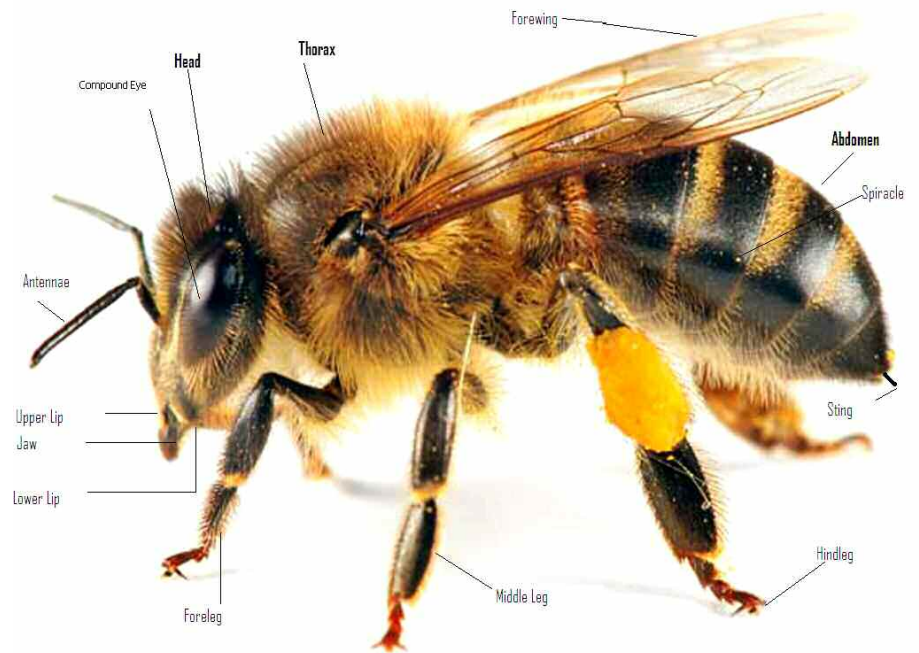
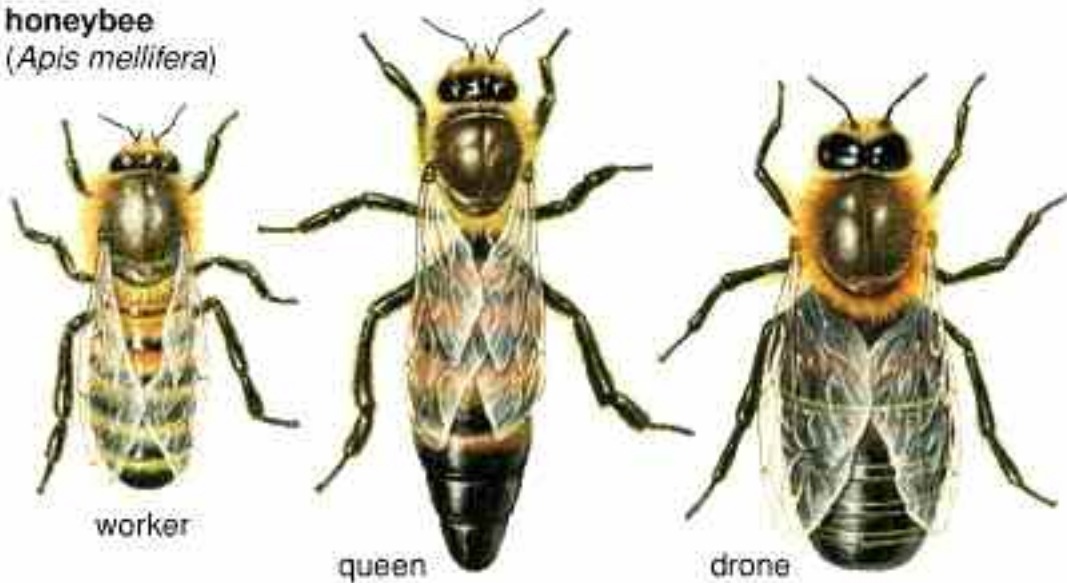


Beekeeping Overview



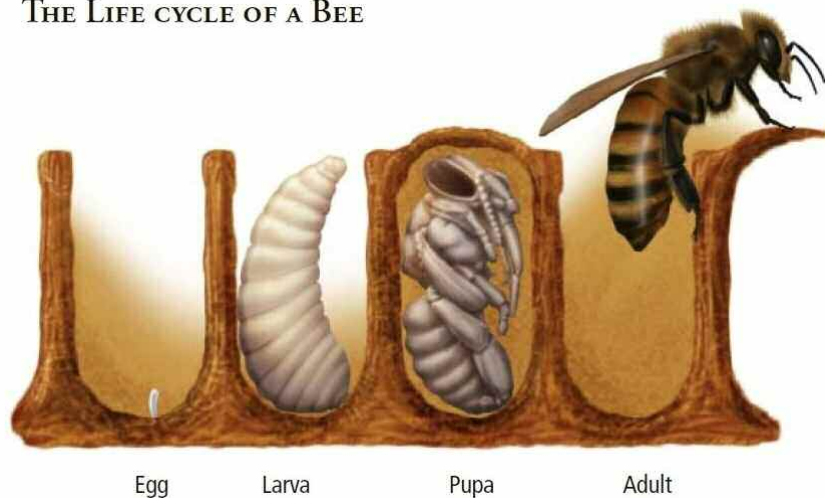
Honeybees by Role

honeybee
(*Apis mellifera*)

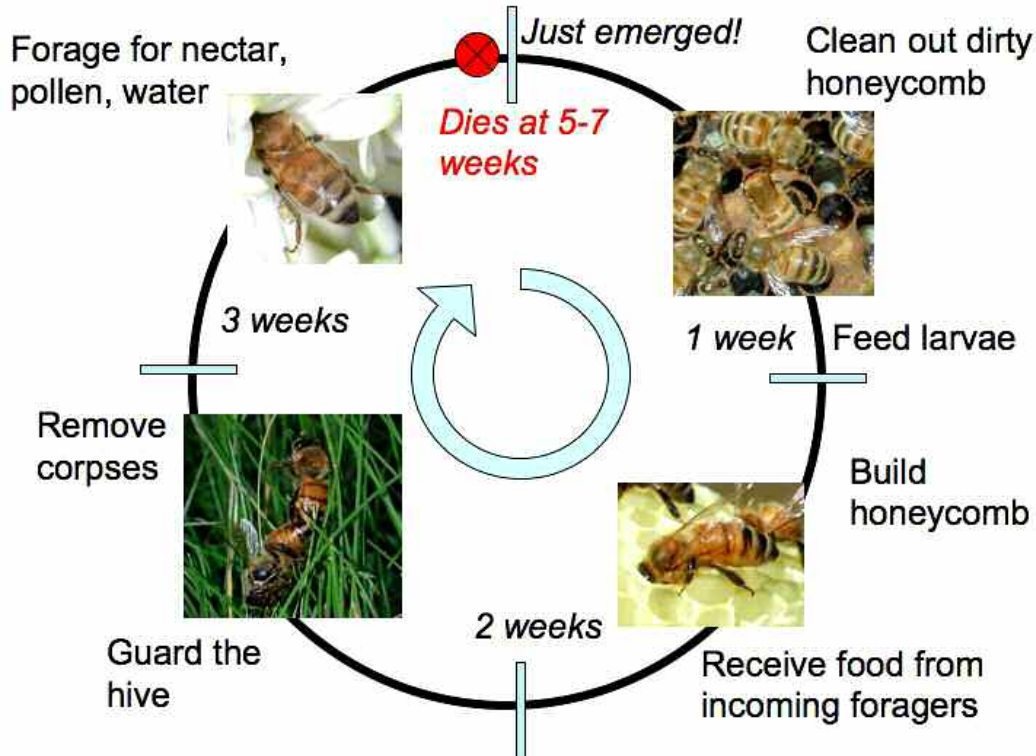


Brood in the Hive

THE LIFE CYCLE OF A BEE



The Life of a Worker Bee (you think your job is bad?)



Fun Facts About Bees

(Thanks to “The Beekeepers Handbook” by Sammataro and Avitabile)

Flight

- Honey bees fly at 9-15mph and strokes its wings at about 11,500 times a minute.
- In one trip a honey bee can visit about 75 and up to 3000 flowers.
- A bee spends 5-150 minutes per trip
- A bee travels an average of 1600 round trips in order to produce 1 oz of honey.
- Bees fly 10-15 tips/day, up to 150 tips/day have been reported.
- Bees fly 1.2-2.5 miles and a max of 6 miles from the hive

Misc facts

- The brain of a worker bee is about a cubic millimeter, but has the densest neuropile tissue of any animal (they're smarter than you!)

Nectar collection

- It takes 12 honeybees (in their lifetime) to make 1 teaspoon of honey

Energy

- The energy in 1 ounce of honey would provide one bee with enough energy to fly around the world
- The brood nest temperature in a healthy hive is 93-94 degrees year round

Nurse bees

- 1300 nurse bees inspect and visit each larvae, feeding them 2% of the time, and make 7200 visits per larvae

The Queen

- Queen is fed every 20-30 minutes a peak brood rearing
- Queens can lay up to 2000 eggs a day
- Queens can live up to four years, but the most productive are between one and two years old

The Hive

- Worker larvae grow 900-1100 times the weight of the egg
- Queen larvae grow 1500-1700 times the weight of the egg
- In the normal hive at the height of the season:

300-1000 drones

25,000 older foragers

25,000 young house bees

9000 uncapped larvae

6000 eggs

20,000 capped brood incubating

1 queen



Look for the GFE label. It's good!